

Purging Local layers in LRM

If you're getting a drawing error in LRM spatial view, like the one in Figure 1, please follow these steps to fix it.



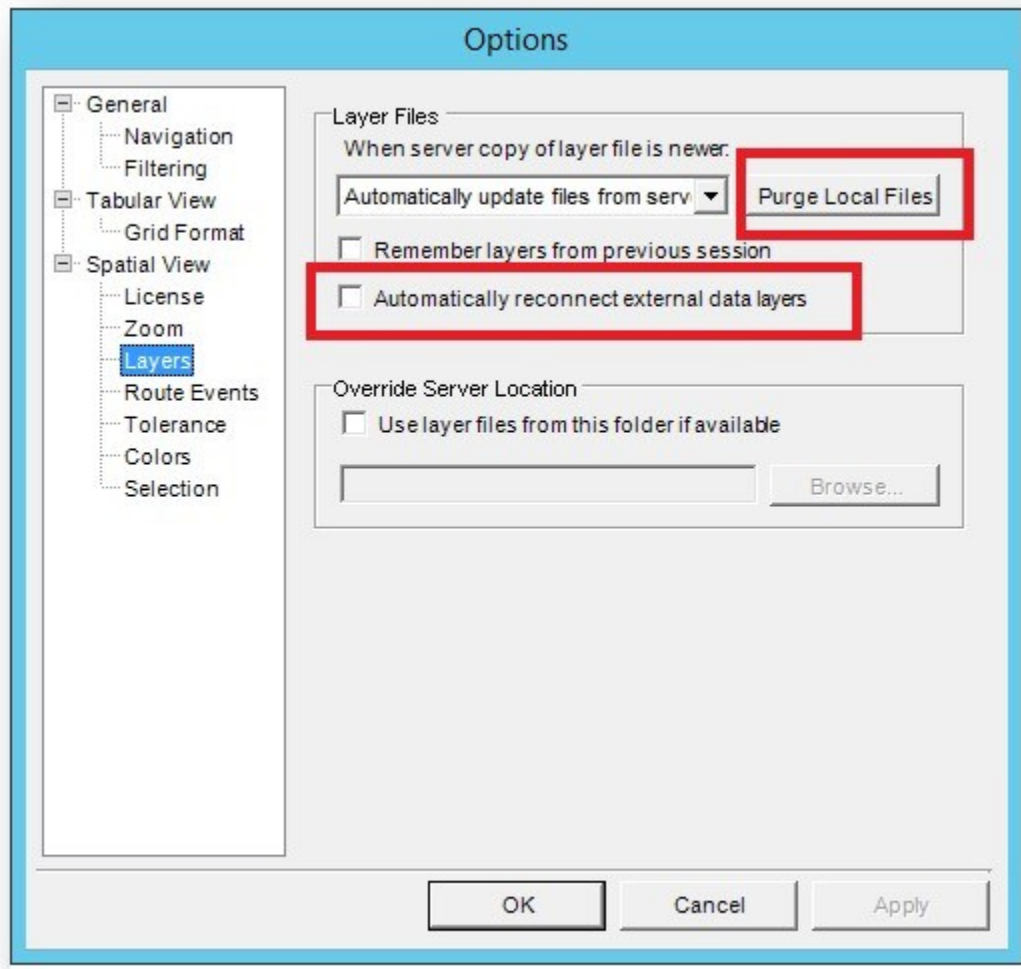
Fig 1 - Drawing error in LRM spatial view

Workaround:

In Spatial View, go to menu Tools>Options then "Layers".

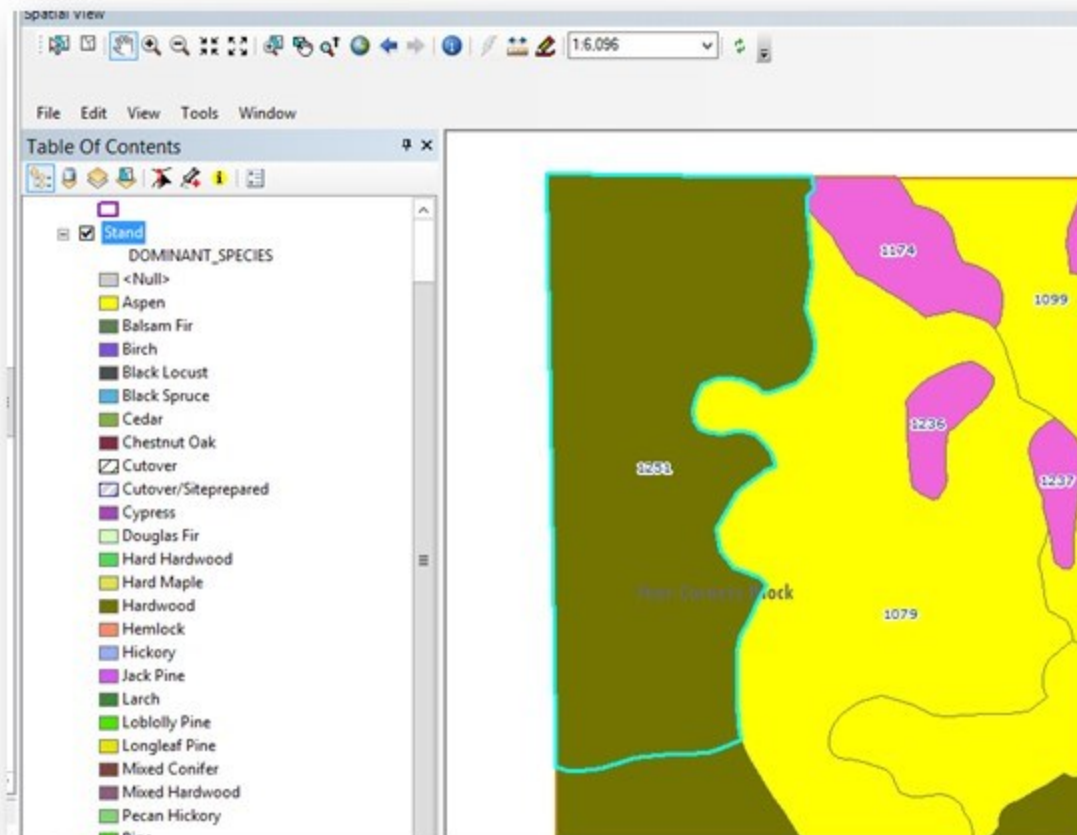
- Uncheck the "Automatically Reconnect External Data Layers"

- Click “Purge Local Files” button.



- Click OK, close and re-open **LRM**.

If all goes well, you should see something like the image below when opening spatial view back up (joined stand layer w/ data download infotype):



Please help to pass this on to other users that might be facing this problem.

Thanks,
LRM Support
<http://www.ttgforestry.com/training/>