



- AVD ACCESS
- LRM 5.5



February 2026

Watch this training in video on YouTube: <https://youtu.be/DXiQvTFmdvQ>



Azure Virtual Desktop (AVD)

The screenshot shows the login interface for Land Resource Manager. At the top left is the Land Resource Manager logo, which consists of a stylized green and white leaf-like shape. To its right, the text "Land Resource Manager™" is displayed in white. Below this, the release version "Release 5.5.0.34" is shown on the left and the date "April 28, 2023" on the right. A green prompt reads "Enter login credentials or press [Cancel] to quit". At the bottom left, the copyright notice "Copyright © 2023 Trimble Inc. All rights reserved." is visible, and at the bottom right is the Trimble logo, which includes a globe icon and the word "Trimble" in a bold, sans-serif font.

Thanks for joining us



LRM has been upgraded !

TTG Edits & LRM Support

Who takes care of my map updates?

- *TTG Edits for PNW (Zaheer Ismail)*
- *NE, APP, AR, NC/SC/VA & Arches (Priyesh L.)*
- *TTG Edits for TX/LA (Michael Brazzell)*

They all have access to the shared mailbox: ttg_edits@ttgforestry.com

Before We Start...



Important links

To Submit Map Updates

<https://arcg.is/1Lm1qj>

(scan the QR Code in the PDF Maps)



TTG Learning and Training portal

www.ttgforestry.com/training/

For the LRM 5.5 User Manual

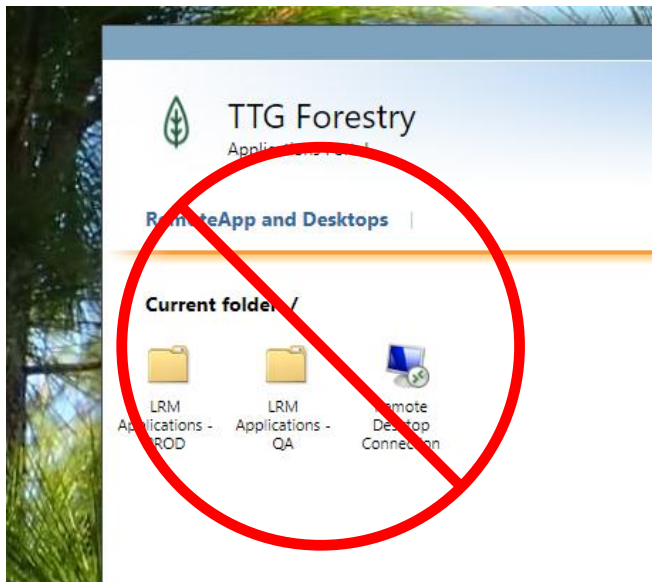
[click here](#)

AVD – AZURE VIRTUAL DESKTOP

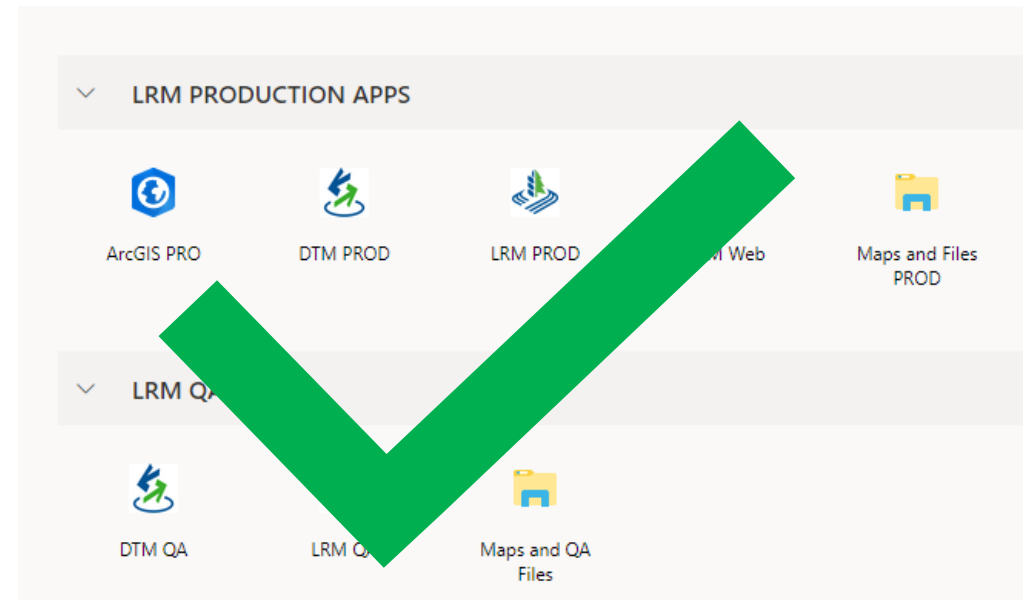
The way you access LRM has changed

- TTG Forestry hosts its systems in the Microsoft Azure Cloud
- AVD (Azure Virtual Desktop) is the new way to access resources in the TTG Azure Cloud

Don't use this anymore (RDWeb)



Use this (AVD) after 2023...



OK, but how do I connect to the new LRM?

Two Easy Ways...Open your browser (Chrome or Edge)

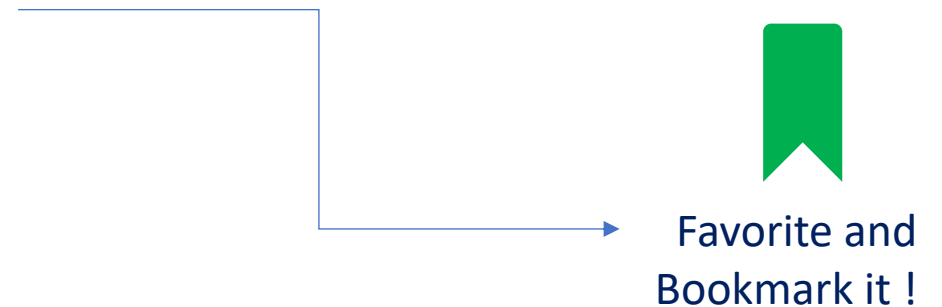
Tip: If you're having login problems, open an incognito window and try again...

➔ Visiting the TTG Forestry website and clicking on the computer icon



➔ Or by going to the website below directly

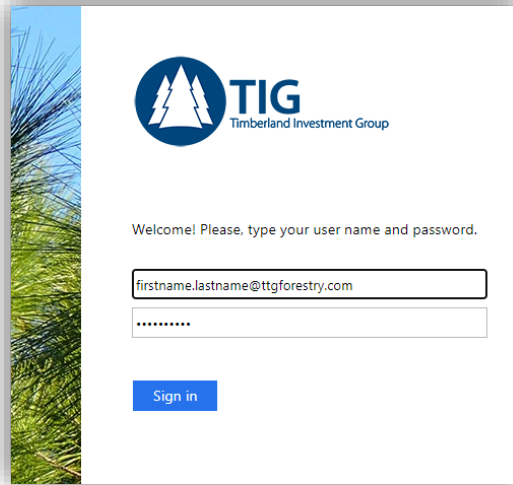
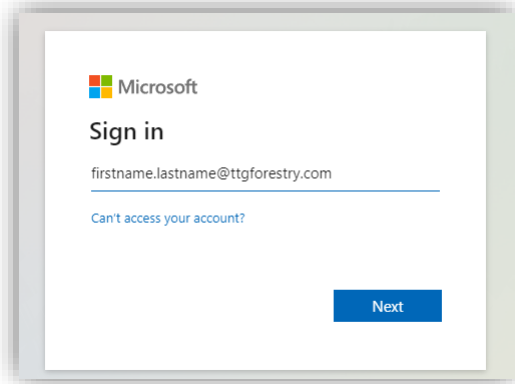
<https://www.ttgforestry.com/remote>



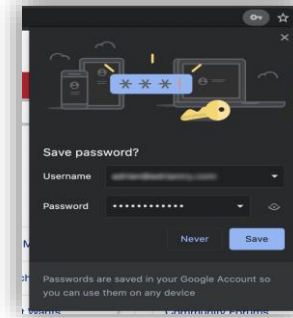
Ok and now?

Sign in !

➔ Sign in with your TTG credentials, just like in the old environment



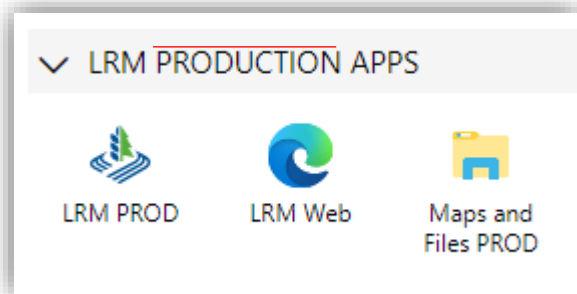
*Save your password
In the browser so you don't need to
remember every time!*



Don't know/remember your TTG domain password?
Access this website to reset it: [Microsoft Online Password Reset](#)
(starting August 5th)

Having problems w/ domain login? Contact BTG IT (Malcolm) at support_us@btgpactual.com Lrm.Support@ttgforestry.com can't help you with that.

➔ And you're in the AVD



← You should see at least these 3 icons on the left. If you don't, please contact BTG IT support (support.us@btgpactual.com)

Before you open LRM: About AVD

You can access LRM in the browser or use a connector

➔ In the Browser

You can use LRM and Maps&Files in the browser now, from any computer connected to the internet.

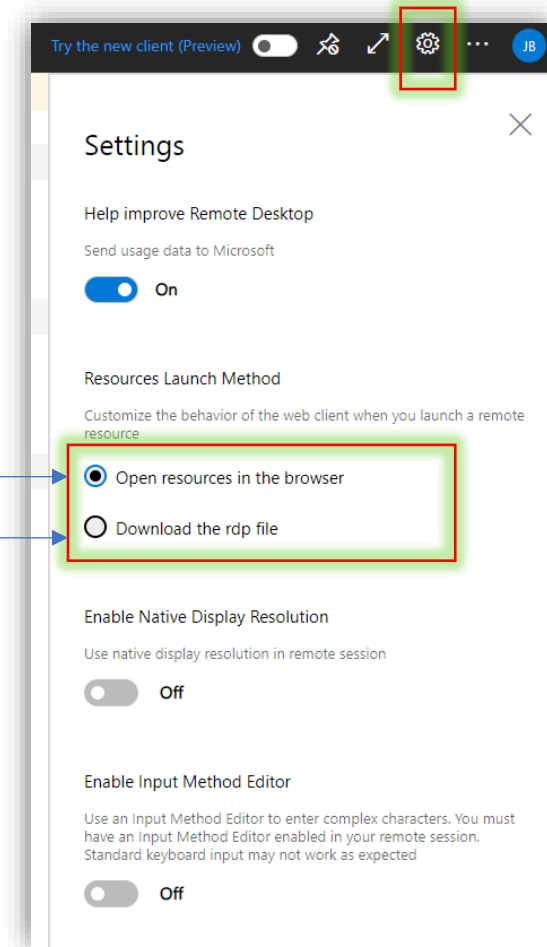
This is the preferred way to access LRM; the only downside is copying and pasting files from AVD to your PC with Ctrl+C and Ctrl+V doesn't work. You must follow the procedures outlined on the slide 7 to copy files down to your computer.

➔ Use an RDP connector file

If you choose “Download the rdp file”, you'll need to have the new RDP Red connector client installed in your computer. Ask your IT to install it from the link below.

Choosing this option, copy and paste works and it works just like the RDP connector you used to use before the upgrade. Download the connector, double click, sign in and use LRM.

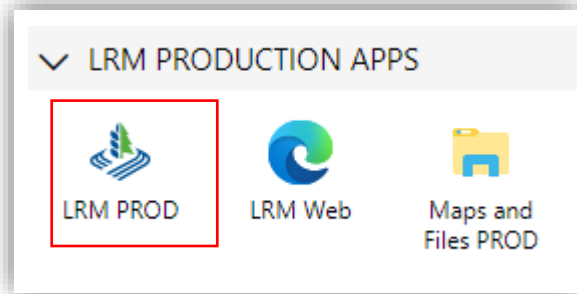
[Install Microsoft Azure Remote Desktop Connector](#)



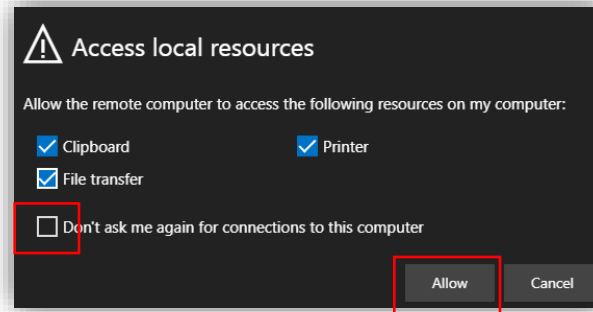
Opening LRM 5.5 in the Browser

It's a new LRM version , but nothing really changed visually!

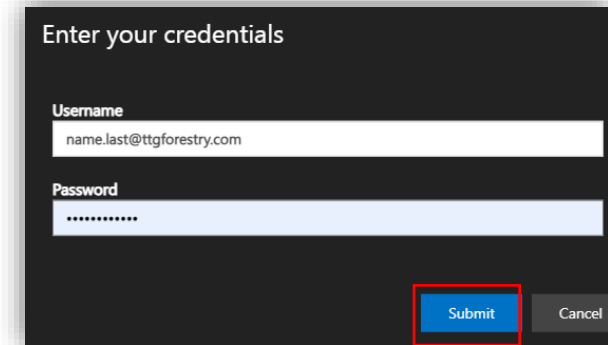
➔ Click the LRM PROD



First time, check all and mark "Don't ask..."

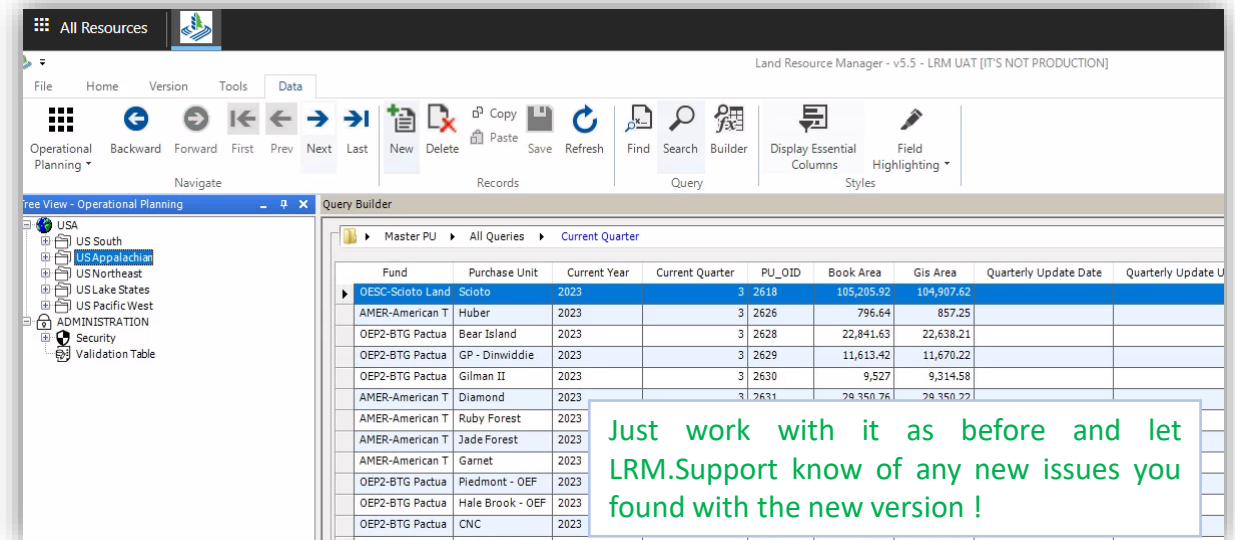


Re-enter your credentials and hit "submit"



➔ And LRM 5.5 will be shown

If you're not an IWA user, you'll see a logon screen ➔

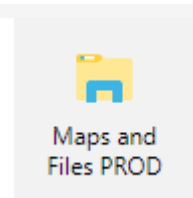


Just work with it as before and let LRM.Support know of any new issues you found with the new version !

Copying Files in / out of AVD

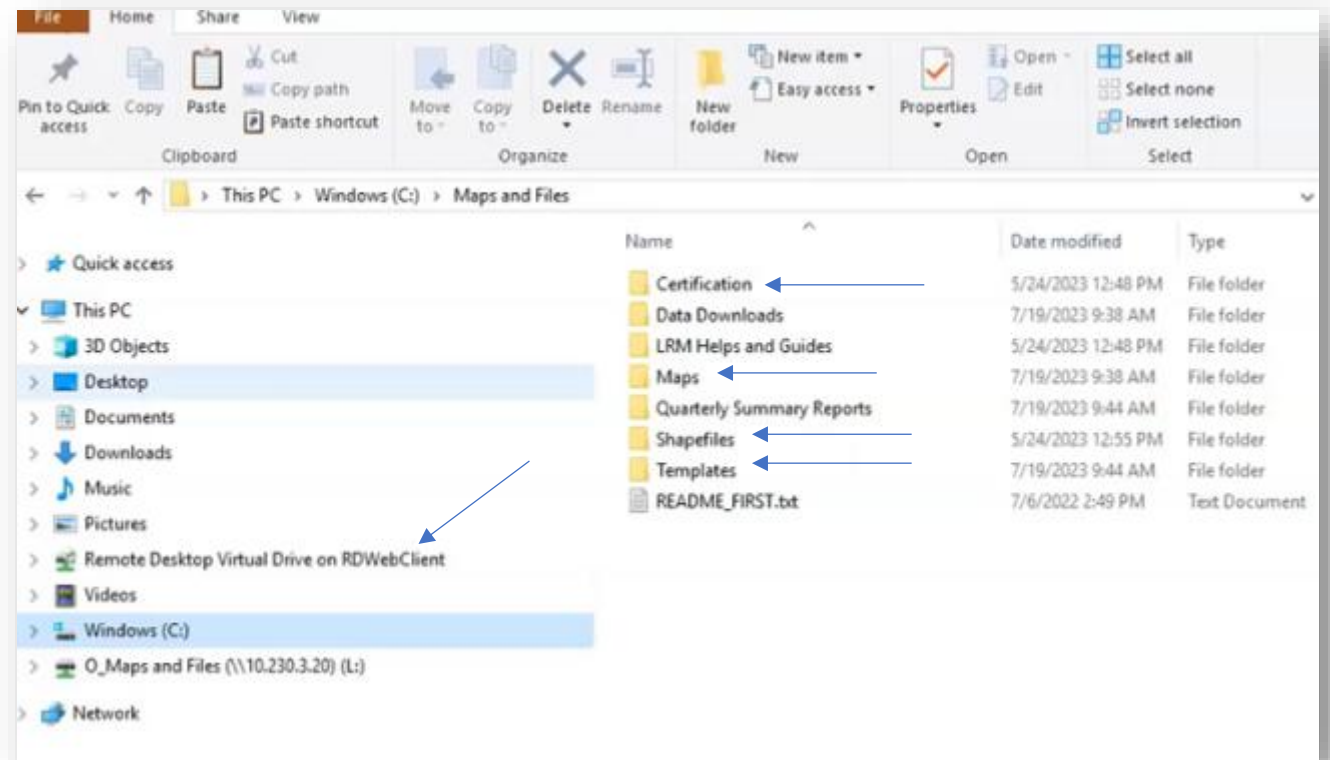
Ctrl+C / Ctrl + V doesn't copy from the browser to desktop

Let's copy the PDF Maps from the server down to your computer.. Go ahead and open "Maps and Files PROD"



Click this icon > Sign in > Navigate to the folder Maps>Current>IMAGE MAPS

- Select the PDF maps that you want to copy to your computer (hold ctrl for more than one), right click and click "Copy".
- Navigate to the "Remote Desktop Virtual Drive" icon on the tree view and open the folder "Downloads".
- Right click on the Empty space and click "paste" there. The browser will download them like any other file from the internet.
- Watch the the video too see in details →



Watch the video training on YouTube clicking here (<https://youtu.be/DXjQvTFmdvQ?t=1082>)

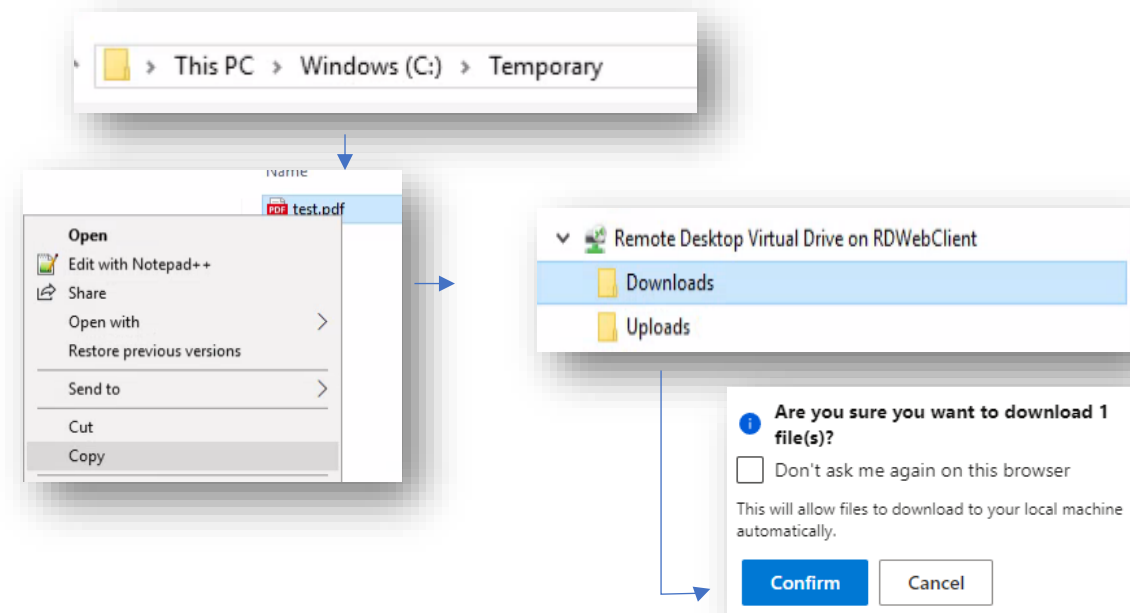
Saving Reports and Map Files to your computer

A little different in the Web connector. There's no //tsclient on it

- If you're using the Web version of AVD, you cannot save reports and maps directly to the Virtual Drive and Download. Use the Red connector for it.
- But if you still want to use the Web version, save the reports or maps to **C:/Temporary** or the **X: drive** that's located on the C drive of the Remote Computer.
- Then, after saved, you can go to Maps & Files and copy/paste the files to the Virtual Drive>Downloads.
- The browser will ask you to download like any other file you download from the web



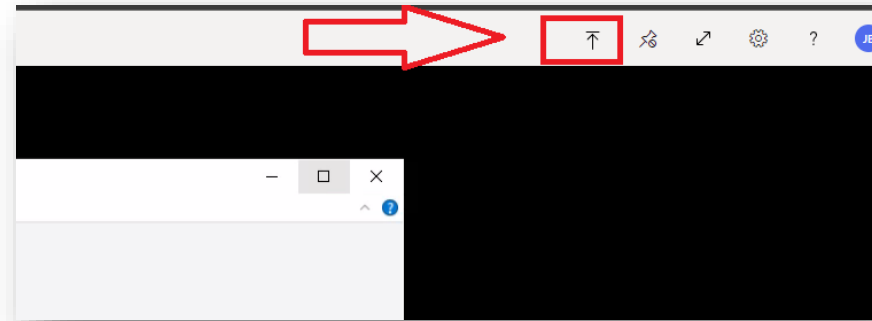
Save on
C:/Temporary first



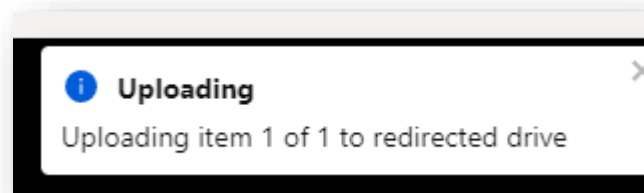
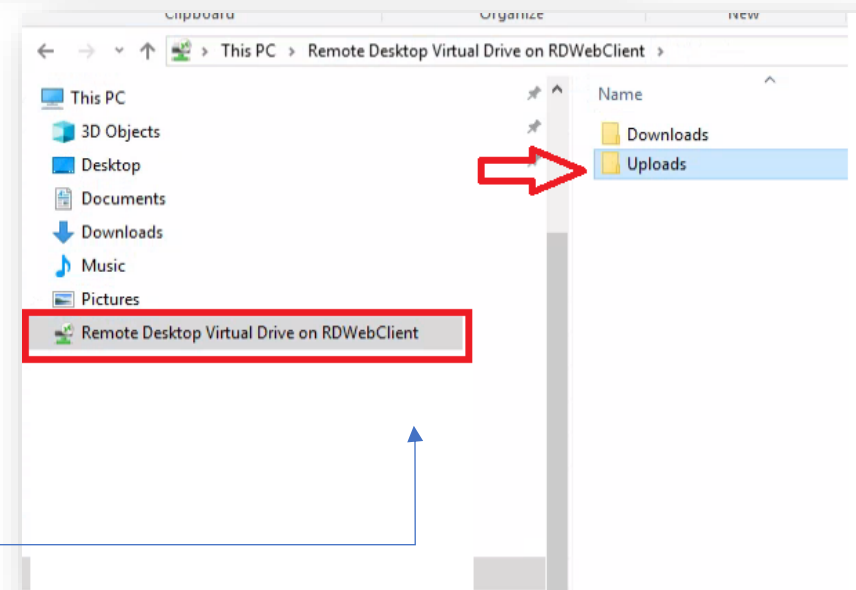
Uploading Files from your computer to the cloud

Just like you upload a file to any website

- If you're using the Web version of AVD, there's an upload file button on the righthand side of your screen



- Click and pick the file you want to upload and hit Open.
- Your uploaded file will be under the "Uploads" folder in the Virtual Drive.
- If you're attaching a file to the LRM related docs, pick it from the virtual drive when attaching...
- Files in the virtual drive are only available while your session is connected and will be cleared once you logoff.**

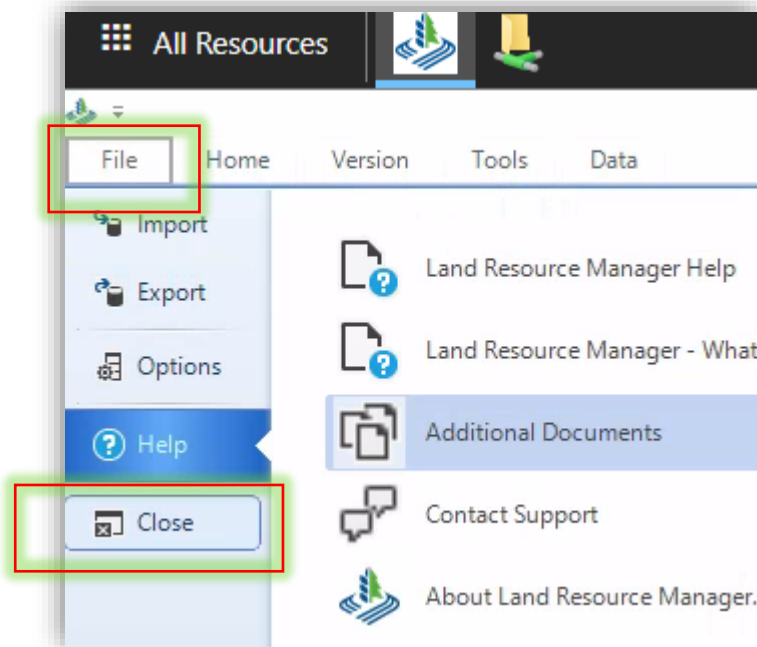


IMPORTANT

Always close LRM properly!

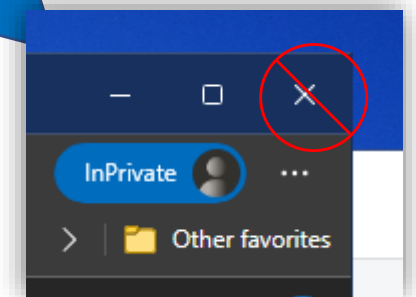
More important than ever before, always close LRM using the proper way when you're done working with.
What's the proper way ?

- **File Menu > Close** (*post your version first if you have edits*)



If you close the browser window, LRM will be still running in the server, slowing everything down for the other users and consuming licenses and resources.

Always make sure to close LRM using the File Menu



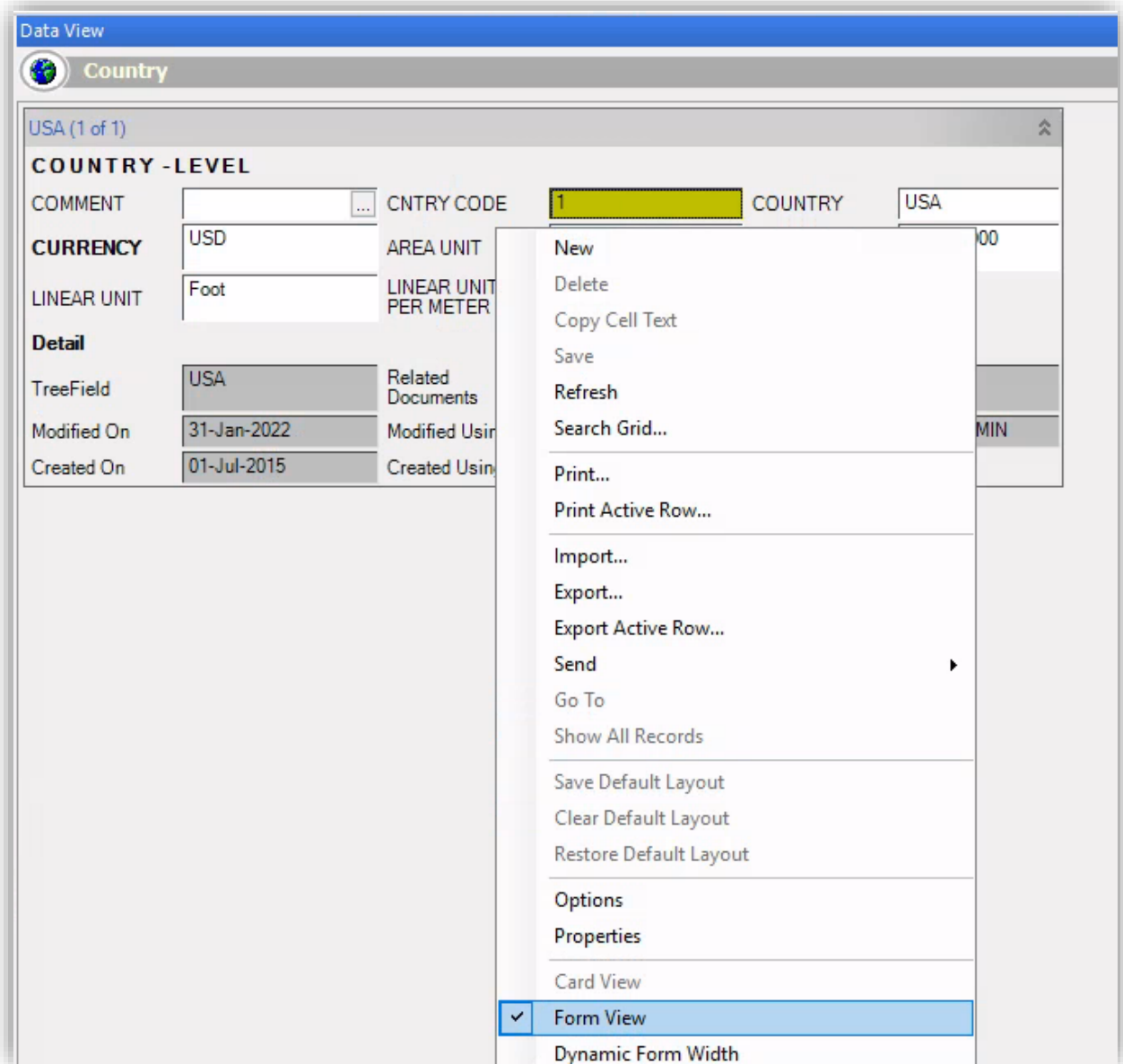
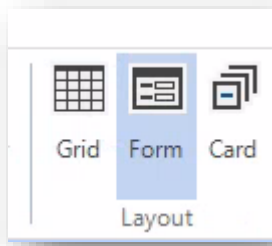
Known Issues

Form view is automatically displayed

- If any grid shows in “Form View”, like the image on the right, you can restore it to display as a grid.
- *Right-click on the empty space below it and uncheck the “Form View” option on the menu*

Or

- *In the Ribbon Menu, layout group, toggle between Grid | Form | Card view and keep the one you like best*

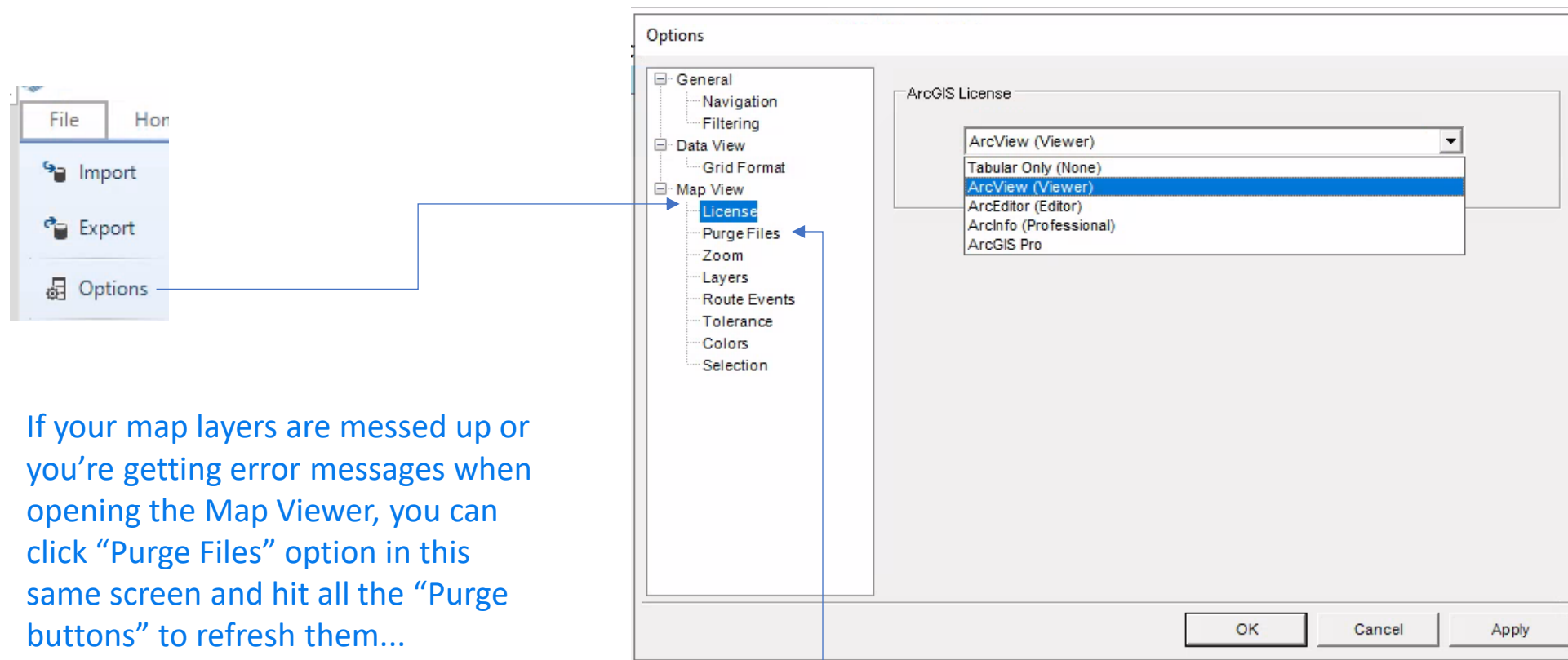


If your Maps aren't showing

If your “Map” button or “Send to Map View” are greyed-out

If you can't see maps or Send to Map View when right-click a stand or tract, it's because you haven't selected a spatial license to use in LRM.

- To fix that, Click LRM File Menu, then Options.
- Click *License* under *Map View* and make sure at least *ArcView* is selected in the drop down.



The screenshot shows the LRM Options dialog box. On the left, the 'File' menu is open, showing 'Import', 'Export', and 'Options'. A blue arrow points from the 'Options' menu item to the 'Options' dialog box. Inside the dialog, the 'Map View' section is expanded, and the 'License' option is highlighted. A second blue arrow points from 'License' to a dropdown menu in the 'ArcGIS License' section. The dropdown menu is open, showing the following options: 'ArcView (Viewer)', 'Tabular Only (None)', 'ArcView (Viewer)' (highlighted), 'ArcEditor (Editor)', 'ArcInfo (Professional)', and 'ArcGIS Pro'. At the bottom of the dialog are 'OK', 'Cancel', and 'Apply' buttons.

If your map layers are messed up or you're getting error messages when opening the Map Viewer, you can click “Purge Files” option in this same screen and hit all the “Purge buttons” to refresh them...

SUPPORT { I NEED HELP, WHAT DO I DO? }

Two Support Groups – See which one to reach

IT SUPPORT

- My login/password is not working
- My password is expired
- Need to reset my password
- Can't copy files
- I don't have access to something I should have

Phone: [212 441 3099](tel:2124413099)

E-mail: support_us@btgpactual.com

Add [TTG Forestry] on the email subject so they know who to direct it to

LRM SUPPORT

- I have a question regarding data entry
- System errors
- I have a contract issue
- I need help getting data from LRM
- I have an error message
- I have a reconcile error in my LRM status bar

Phone: [404 789 1951](tel:4047891951)

E-mail: lrn.support@ttgforestry.com